

## Shelves for the large rear cupboard in the GC600 & GC680

### Installation instructions

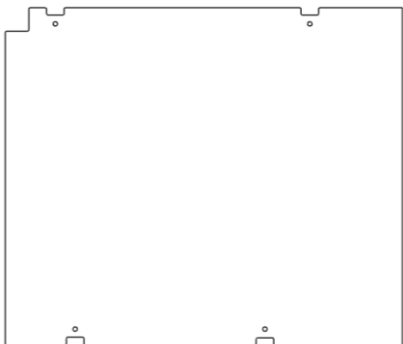



#### Introduction




These wardrobe shelves have been specifically designed to be installed without the need for any permanent alterations to your VW Grand California, the process should take approximately 20 minutes.

These shelves fit both the GC600 and the GC680, in the large left-hand side, under bed cupboard which is usually accessed from the rear of the Grand California. This is the cupboard to the left of the electrical cupboard and opposite the gas store. This is the cupboard indicated as GC LCS1 in Figure 1.

These instructions describe the installation of the 2 shelf option, if you have ordered the 1 or 3 shelf option the process is identical and these instructions still apply. The only difference between the 1, 2 and 3 shelf options are the number of shelves, brackets, nuts and bolts supplied.

#### Components

ID	Description	Image	QTY
A	Shelf, 6mm Anthracite HPL, 460mm x 540mm		2
B	Aluminium track, 11mm x 20mm x 660mm, with double sided tape attached		4
C	Brackets, 20mm x 20mm x 18mm		8
D	Slot nut, M5		8

E	Round head bolt, M5 x 10mm		8
F	Hexagon nut, M5		8
G	Counter sunk socket screw, M5 x 12mm		8

## Installation steps

1. This step is most easily done in the comfort of your home, e.g. at the kitchen table. Insert 2 slot nuts (D) into each aluminium track (B). This can be done by sliding them in from an end, or rotating them in at any point along the track. The flat face of the slot nut (D) faces out of the track (B), and the triangular side with the small spring loaded bearing faces into the back of the track as shown in Figure 2. At this point you should note that one of the aluminium tracks has a small mitre on the corner (Figure 4), this mitre should be at the bottom of the track. The threaded hole in the slot nuts (B) should all point upwards.
2. Insert one of the round head bolts (E) into the small ROUND hole on bracket (C), use the supplied Allen key to screw the bolt onto one of the slot nuts previously placed in the aluminium track as shown in Figure 3. At this stage the bolts (E) only need to be loosely tightened. Repeat for all 8 brackets until you have an assembly looking like Figure 5. You can set the height of the shelves now, or after installation.
3. It is highly recommended that you first fit the shelves WITHOUT removing the backing tape on the double sided tape. This 'practice fit' enable you to ensure the correct orientation and positioning of all parts before attaching the aluminium tracks with the double sided tape. Take the shelf support assemblies prepared in step 2 and position them inside the wardrobe as shown in Figure 6 and 7. The aluminium track (B) with a mitred corner (Figure 4) should be placed in the rear left hand corner of the cupboard identified in Figure 6 with a black circle. The aluminium tracks (B) only need to be loosely positioned at this stage.
4. Insert a shelf (A) by tilting and rotating it into position. Move the aluminium tracks if necessary, so that they align centrally in the notches on the shelf. Repeat until all the shelves are positioned as shown in Figure 8.
5. Take the countersunk socket screws (G) and push them through the shelf and through the SLOT in the brackets (C). Make sure each shelf has 4 socket screws (G) which are seated correctly through the brackets (C). This step is important to ensure that the aluminium tracks are all aligned correctly. With everything in place mark carefully the bottom and top position of each aluminium track. This can be done with a pencil, or a piece of masking tape.
6. Remove the shelves. One at a time remove each aluminium track, peel back the backing tape on the double sided tape and attach the aluminium tracks into the positions marked in step 5.
7. Replace the shelves (A) and the counter sunk socket screws (G), this time use the hexagon nuts (F) under each bracket (C) to fasten the shelves and brackets together as shown in Figure 9.
8. Tighten all bolts using the supplied Allen key, they need not be over tightened, just hand tight should be sufficient.

## Installation complete.

We hope you enjoy your new cupboard shelves for a long time. If you encounter any difficulties, please do not hesitate to contact us for advice and support:

On our web page: [www.YesCampervan.co.uk](http://www.YesCampervan.co.uk)

by e-mail: [Joe@YesCampervan.co.uk](mailto:Joe@YesCampervan.co.uk)

On Facebook: <https://www.facebook.com/Yes-Campervan-106344454480912>

## Figures 1-9

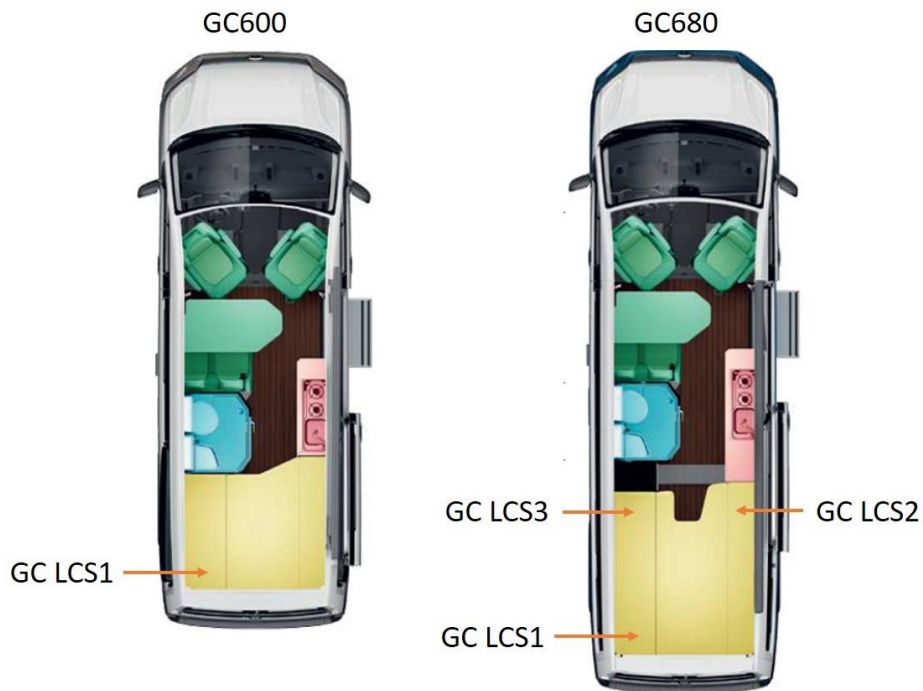


Figure 1 – These shelves fit the cupboards indicated as GC LCS1.



Figure 2. Insert slot nuts (D) into Aluminium track (B).



Figure 3. Attach brackets (C) using round head bolts (E).

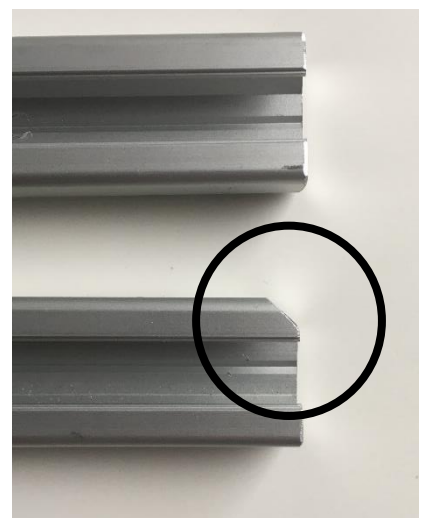


Figure 4. Mitred corner on one Aluminium track (B)



Figure 5. Align brackets at desired shelf heights.



Figure 6. Positioning of aluminium track (B) left hand side.



Figure 7. Positioning of aluminium track (B) right hand side.



Figure 8. Positioning of aluminium tracks and shelves



Figure 9. Attach hexagon nuts (F) onto each countersunk socket screw (G)